

CO457 Business Modelling Notes for Task 3 CW2

Introduction:

In CW2 for CO457 Business Modelling the third Task states:

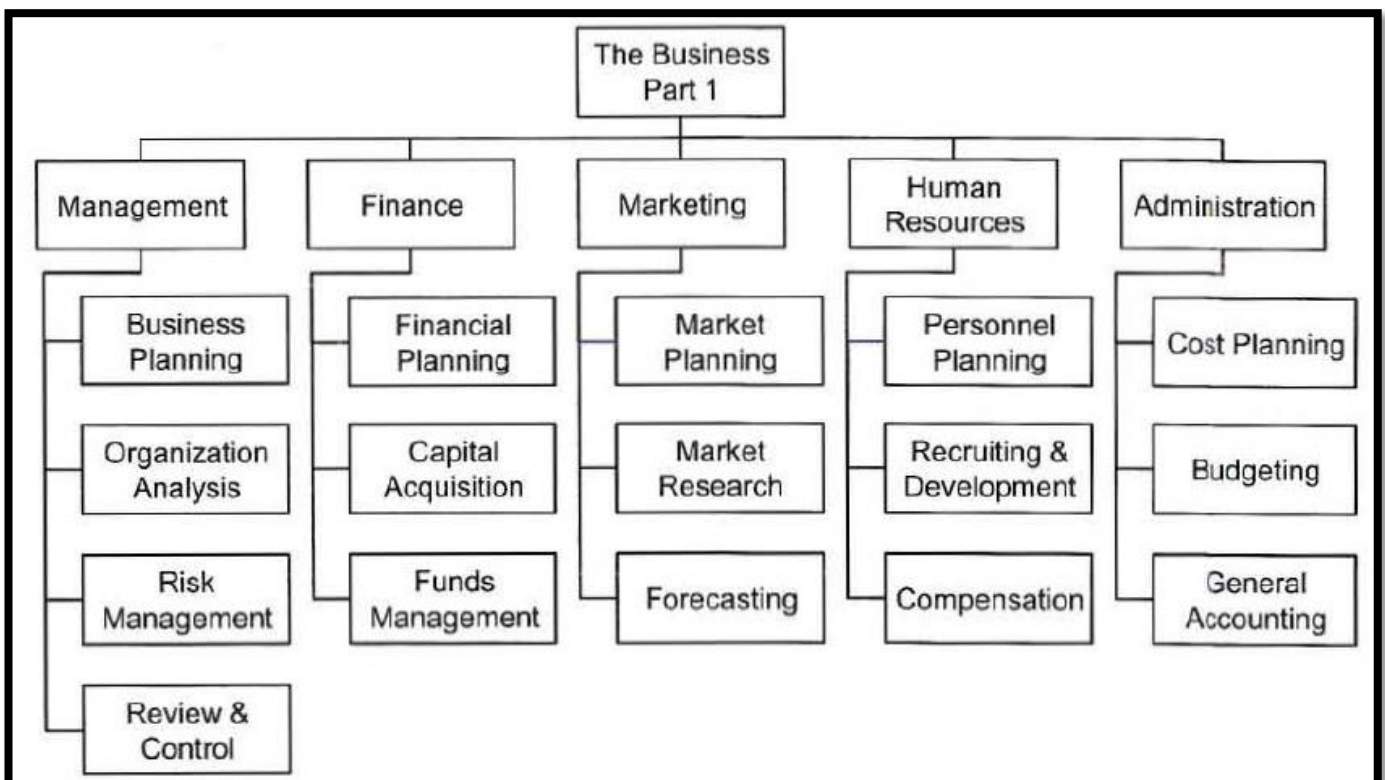
1. A Functional Diagram for each Restaurant Department

Create a functional diagram for each of the restaurant's departments (Bar; Dining; Kitchen; Back Office).

This third task is asking you to draw functional diagrams for each of the departments within the restaurant.

The functional diagrams that you create must adhere to the principals of good business modelling, in that they must be detailed (within the context of what needs to be shown), consistent in their approach and above all clear. Precision in the creation of your diagrams is paramount and it is attention to detail and consistency that will earn you assessment credit.

Below is an example functional diagram for a generic business. In this example the functional areas being modelled are within the functional decomposition of a generic business. Note, you should not use any of the examples provided within our presentations as one of your functional diagrams. However, you should use the examples as a reference point for your own work i.e. if you are unsure of your approach see how it corresponds to the example provided.



What to consider when developing your Functional Diagrams

As with all of the business models we are asking you to develop for your assignments you need to make sure that you include logical entries that are well thought-through and carefully written. The assessment for this module is based on your ability to create well-crafted business models (diagrams or tables) that clearly and effectively articulate an aspect of the restaurant case study project. This means that attention to detail and overall presentation of each task model are of the utmost importance.

The following describes the aspects involved in creating a perfect functional diagram. Attention to detail in the creation of your diagram is paramount. The concept for the diagram is relatively simple, but in order to achieve a good mark you must execute it perfectly.

- All of the function boxes within each functional diagram should be exactly the same size each time they are used and for all the diagrams produced
- All the objects should be proportionally spaced, both vertically and horizontally, the same way each time, so that your diagrams appear uniform in their approach
- Angle joints used in connecting lines should always be 90 degrees
- The text within the boxes/on lines should be black using a plain readable font (Ariel is a good choice), no less than 10pt in size, and no greater than 14pt
- The text within the boxes will succinctly record the functional area within the functional diagram at that point
- The lines connecting the activity boxes should be perfectly vertical or horizontal connecting from the middle of the appropriate box side
- The layout of each functional diagram should be hierarchical, going from top to bottom, so that they always start in the top middle with the department name
- The connecting lines should be solid, singular, black and the same thickness as the box borders
- The connecting lines should all be uniformly thick, but not too thin or too wide
- The ends of the connecting lines should be square i.e. no arrows, making contact with the functional area box it is connecting to
- The functional diagram should be well balanced and laid out on the page e.g. like the example provided above and within the class presentations
- Each functional diagram should be labelled with an appropriate title, such as 'Functional Decomposition for Dining Area', along with your name as the creator of the model, the date of its creation and its revision number

As you can see from the list above the functional diagrams must be exactly produced. However, it would be a very good idea to start with a rough model drawn out on a piece of paper first for each one. This way you can work through what you want to produce, which will make executing it a lot easier when it comes time to produce the final version in a drawing package.