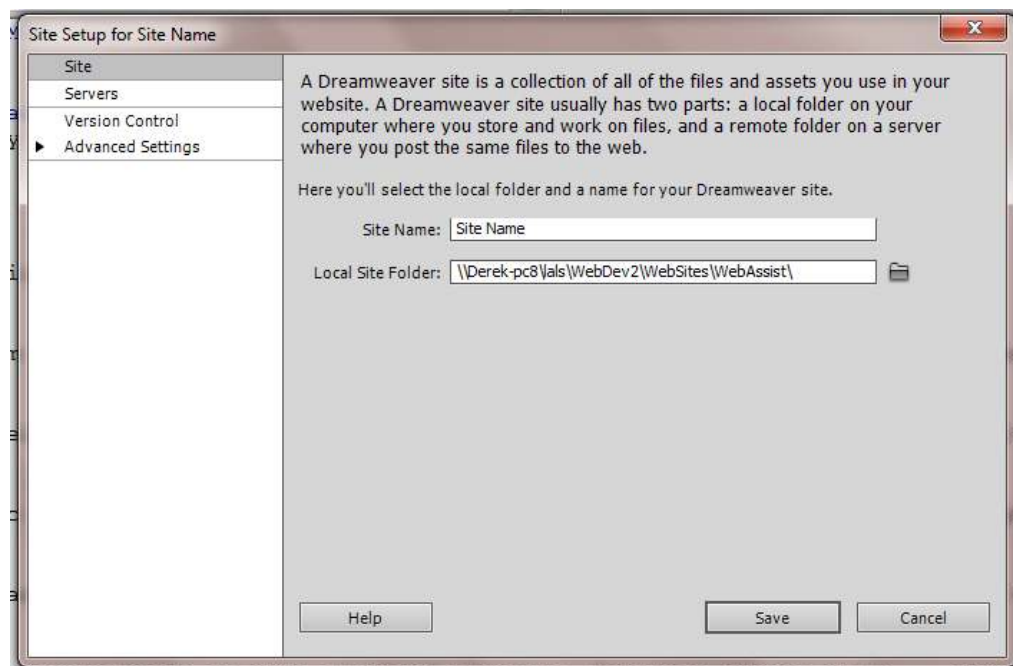


## Setting Up a Web Site

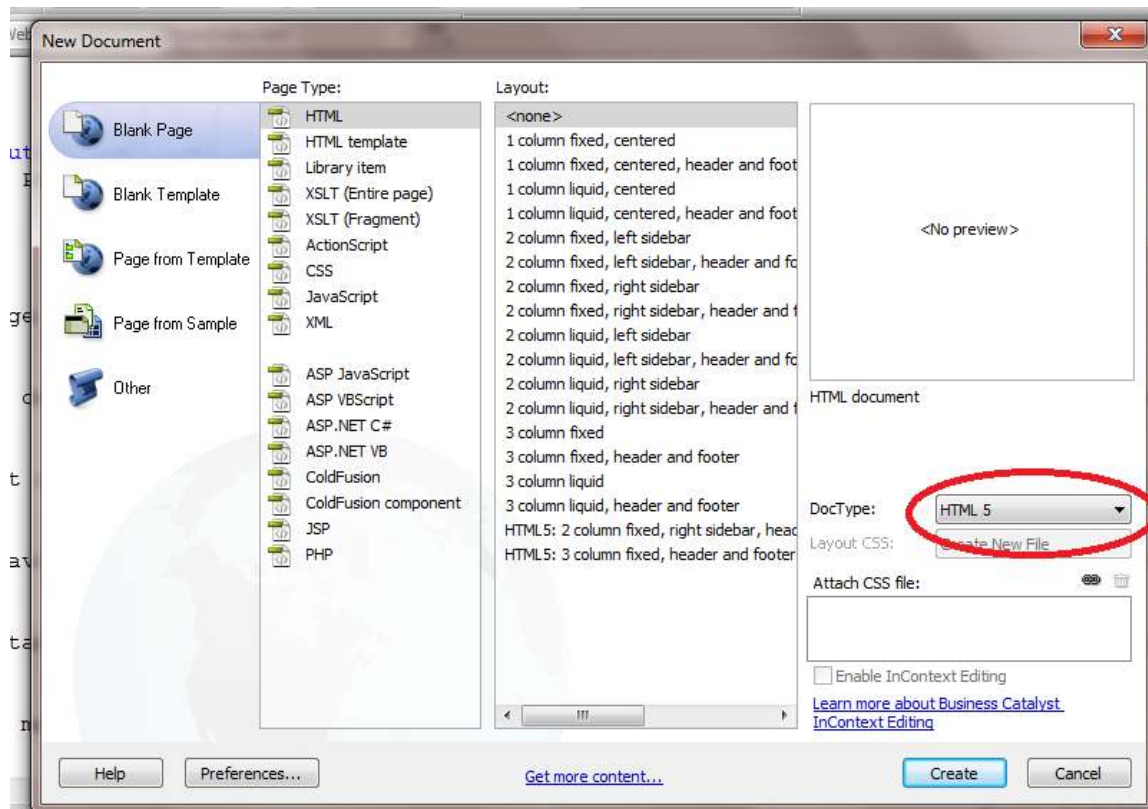
Creating a new web site in Dreamweaver is little more than creating an empty folder, then using the **Site -> New Site** dialog to give your site a name, and to specify that the site will be inside your new folder (in this case called WebAssist).



In my view on Windows PCs the best place to store all your websites is in a YourName\Websites folder on your drive C: or better still on a separate data drive (D:). Using your Documents folder is not recommended as it can disappear if windows crashes.

## Creating Your First HTML5 Page

If you have not yet altered the Dreamweaver Preferences (see later) then it is best to create a new page using the File -> New dialog. Make sure that HTML5 is selected in the DocType drop down list. Select Blank Page, Page Type: HTML and Layout: None.



If you have an earlier version of Dreamweaver, then you will need to create an empty HTML5 page manually and use it as a starting point each time (by using **File -> SaveAs**)

```
<!DOCTYPE HTML>
<html>

<head>
  <meta charset="utf-8">
  <meta name="Author" content="Dr Derek Peacock">
  <title>Page Title</title>
</head>

<body>
</body>

</html>
```